



7 Beauford House Bamford Mill, Bamford, Hope Valley, Derbyshire, S33

Saxton Mee

7 Beauford House Bamford Mill Bamford

Offers In The Region Of

£550,000

Nestled in a stunning riverside setting within the historic Bamford Mill, this truly unique apartment offers breathtaking views of the River Derwent & the picturesque Peak District countryside. A rare opportunity to acquire a home of such character, this beautifully presented three-bedroom, two-bathroom property seamlessly blends the charm of its industrial heritage with modern luxury. Exposed beams, high ceilings & original features add to its undeniable appeal, while contemporary finishes ensure comfort & sophistication.

The expansive dual-aspect living/dining room is bathed in natural light, creating a warm & inviting atmosphere. This spacious & versatile area is perfect for both relaxation & entertaining, with large windows framing spectacular views of the surrounding landscape. The bespoke fitted kitchen, thoughtfully designed with high-quality units & premium appliances, combines practicality with sleek aesthetics. The master bedroom benefits from an en suite shower room & a separate utility store, while the additional bedrooms offer flexibility for guests, a home office, or a creative studio space.

Residents of Bamford Mill enjoy access to beautifully maintained communal gardens that extend to the banks of the River Derwent. The development also features the prestigious Derwent Room. Secure carport parking is provided for two vehicles, with additional visitor parking available for convenience.

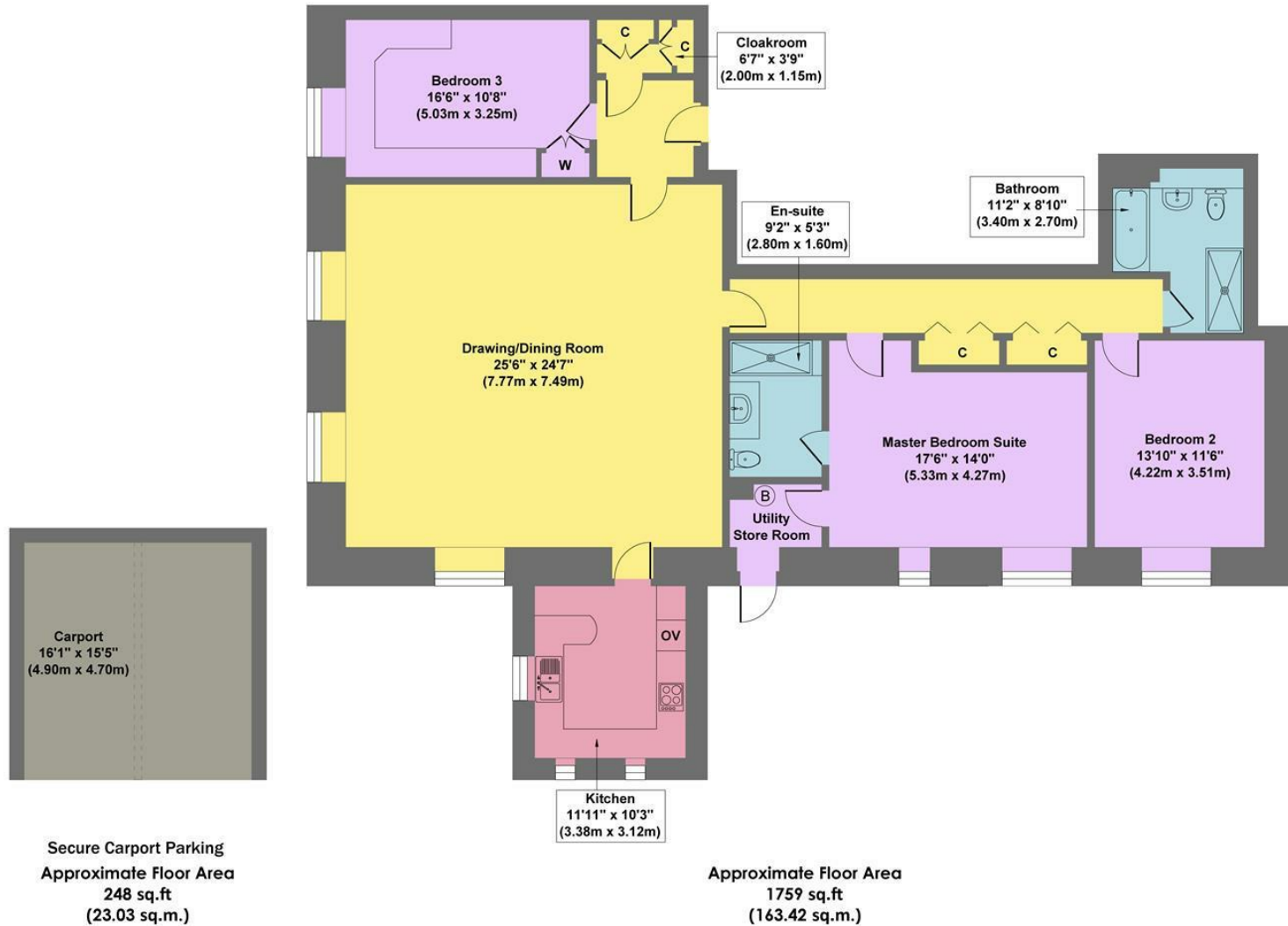
Situated in the heart of the thriving village of Bamford, this remarkable home benefits from a welcoming community & a superb range of local amenities. A charming country inn, a well-regarded primary school, a golf club & excellent rail links are all within easy reach, making this an ideal location for those seeking both tranquillity & connectivity. With its rich history, exceptional setting & high-end finish, this apartment represents a rare & exciting opportunity to acquire a distinctive home in one of Derbyshire's most sought-after locations.



- Stunning Riverside Setting With Peak District Views & Fishing Rights
- Luxury Apartment In A Historic Mill With Lift Access
- Three Bedrooms, Two Bathrooms, Beautifully Presented
- Spacious Dual-Aspect Living/Dining Room
- Thriving Village With Amenities & Both Bus & Rail Links
- Secure Carport For Two Vehicles & Visitor Parking
- Exclusive Derwent Room For Entertaining
- Direct Access to Many Local walks & A Wealth of Outdoor Pursuits
- EPC: TBC
- Viewings: Hathersage Office



7 Beauford House



Approx. Gross Internal Floor Area 2007 sq.ft / 186.45 sq.m

Illustration for identification purposes only, measurements are approximate, not to scale

While we endeavour to make our sales particulars fair, accurate and reliable, they are only a general guide to the property and, accordingly, if there is any point, which is of particular importance to you, please contact the relevant office. The Agents have not tested any apparatus, equipment, fittings or services and so cannot verify they are in working order. The buyer is advised to obtain verification. Please note all the measurement details are approximate and should not be relied upon as exact. All plans, floor plans and maps are for guidance purposes only and are not to scale. Under no circumstances should they be relied upon as exact or for use in planning carpets and other such fixtures, fittings or furnishings. YOUR HOME IS AT RISK IF YOU DO NOT KEEP UP REPAYMENTS ON A MORTGAGE OR OTHER LOAN SECURED ON IT. 'A Life Assurance policy may be requested.' 'Written Quotations of credit terms available on request.'

Banner Cross
T: 0114 268 3241
E: bannercross@saxtonmee.co.uk
www.saxtonmee.co.uk

Hathersage
T: 01433 650009
E: hathersage@saxtonmee.co.uk

Bakewell
T: 01629 815307
E: bakewell@saxtonmee.co.uk

Matlock
T: 01629 828250
E: matlock@saxtonmee.co.uk

